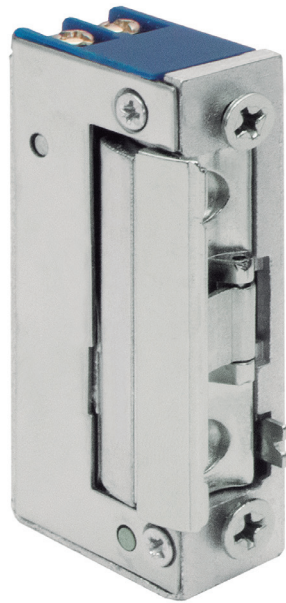


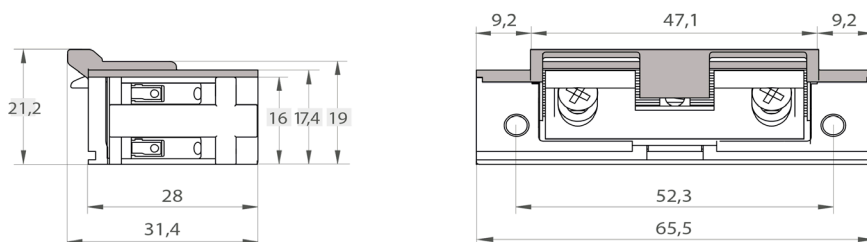
## E-Strike B1



### FEATURES

- Compact size. Width: 16 mm.
- Suitable for narrow profile aluminium, wood and PVC doors.
- Symmetrical and reversible. Can be installed on left-handed or right-handed doors and on the inside or outside of the door.
- Adjustable radial latch.
- Product complies with EN 14846.
- Voltage: 9-16 V AC/DC
- Break-in resistance (keeper's pressure): 4800 N
- Dynamic strength (door impact): 4400 N
- Durability (cycles without preload): 200,000
- Available functions: fail-secure, fail-secure with release lever, hold-open, hold-open with release lever.
- Available with or without faceplate. Short and long faceplates, finished in grey and stainless.

### DIMENSIONS



# E-Strike B1

## REFERENCES

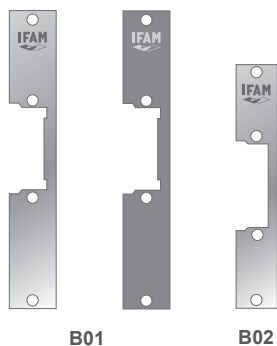
Ref.	Fail secure	Fail secure with release	Hold-open	Hold-open with release	Plate	Plate finish
ESB1A1AN0000	X					
ESB1B1AN0000		X				
ESB1C1AN0000			X			
ESB1D1AN0000				X		
ESB1A1ANB01G	X				S	■
ESB1B1ANB01G		X			S	■
ESB1C1ANB01G			X		S	■
ESB1D1ANB01G				X	S	■
ESB1A1ANB01S	X				S	■
ESB1B1ANB01S		X			S	■

Ref.	Fail secure	Fail secure with release	Hold-open	Hold-open with release	Plate	Plate finish
ESB1C1ANB01S			X		S	■
ESB1D1ANB01S				X	S	■
ESB1A1AND04G	X				L	■
ESB1A1AND04S	X				L	■
ESB1B1AND04G		X			L	■
ESB1B1AND04S		X			L	■
ESB1C1AND04G			X		L	■
ESB1C1AND04S			X		L	■
ESB1D1AND04G				X	L	■
ESB1D1AND04S				X	L	■

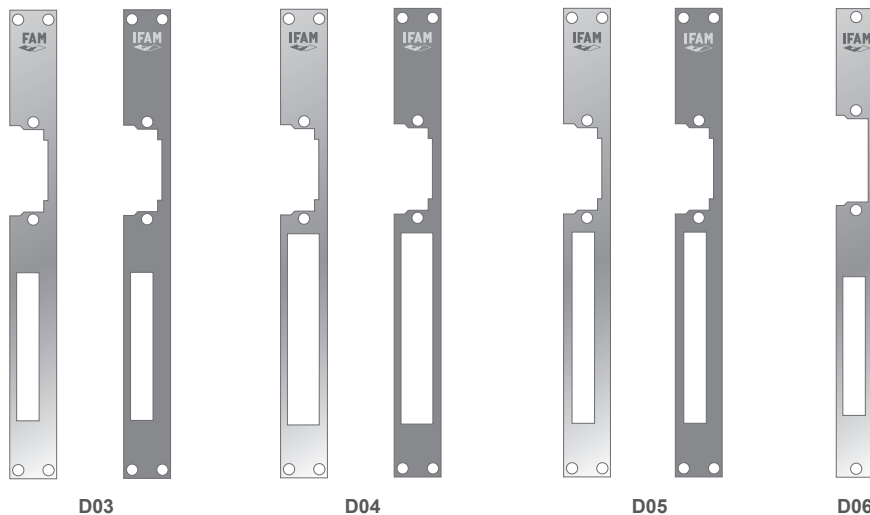
S: Short faceplate L: Long faceplate ■ Gray finish ■ Stainless steel finish

## FACEPLATES

### SHORT FACEPLATES



### LONG FACEPLATES



Ref.	A	B	C	D	E	Face-plate	Finish
ES000000B01G	159	25	44			S	■
ES000000B01S	159	25	44			S	■
ES000000B02S	130	22	44,5			S	■
ES000000D04G	250	25	44	102	17	L	■
ES000000D04S	250	25	44	102	17	L	■
ES000000D03G	250	25	44	79	12	L	■
ES000000D03S	250	25	44	79	12	L	■
ES000000D05G	250	25	44	102	12	L	■
ES000000D05S	250	25	44	102	12	L	■
ES000000D06S	250	22	44,5	74	12	L	■

