



DF1, DF2 and DF3 brake disc locks

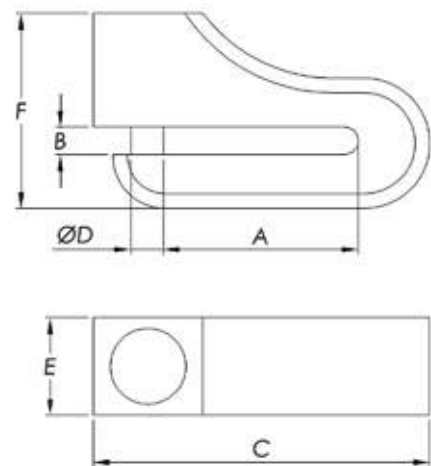
ART00564



FEATURES

- **Body:**
 - Made of zinc alloy.
- **Cotter:**
 - Made of hardened steel.
 - Diameter: 5.5mm (DF1 and DF2) and 10mm (DF3).
- **Opening /locking:**
 - Automatic lock through tubular key.
- **Keys:**
 - Tubular key.
 - Supplied with 2 keys.
- **Colours:**
 - Yellow and red.
- **Packaging:**
 - Fabric cover packed.

DIMENSIONS



	DF1	DF2	DF3
A	21	37	60
B	6	6	8,5
C	48	66	103
D	5,5	5,5	10
E	27,5	28	30
F	47	51	60